

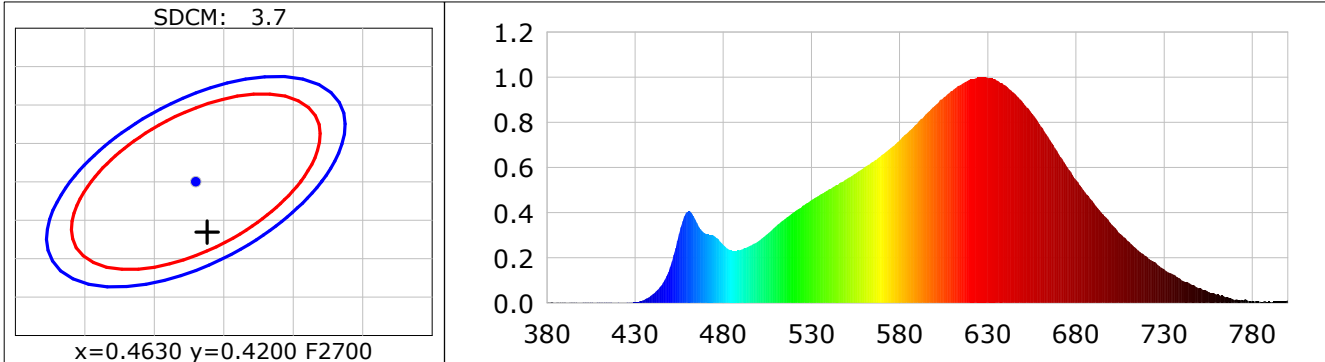
Lightsource Test Report

Product Infomation

Product Category: LED STRIP	Product Type: LED STRIP
Product Spec: ALYA 4	Product Number: 125
Manufacturer: TECSOLELED S.L.	Buyer: TECSOLELED S.L.

CIE Colorimetric Parameters

Chromaticity coordinates: $x=0.4638$ $y=0.4134$ $u(u')=0.2638$ $v=0.3527$ $v'=0.5290$
 CCT: $T_c=2668K$ ($duv=0.00072$) Color Ratio: $R=0.268$ $G=0.705$ $B=0.027$
 Peak Wavelength: 628.6nm Half Bandwidth: 145.0nm
 Dominant Wavelength: 584.1nm Color Purity: 0.634
 CRI: $R_a=93.2$, $avgR(1\sim14)=90.9$, $avgR(1\sim15)=90.9$ TM30: $R_f=88$, $R_g=95$
 GAI: $GAI_BB_8=92.3$, $GAI_BB_15=101.8$, $GAI_EES=43.9$
 R1 =94 R2 =99 R3 =98 R4 =91 R5 =94 R6 =98 R7 =90 R8 =82
 R9 =64 R10=95 R11=92 R12=81 R13=96 R14=100 R15=90
 Color Quality Scale: $Q_a=89.9$, $Q_f=92.1$, $Q_p=91.9$, $Q_g=92.1$
 Q1 =85 Q2 =92 Q3 =92 Q4 =87 Q5 =86 Q6 =86 Q7 =91 Q8 =93
 Q9 =94 Q10=94 Q11=95 Q12=94 Q13=93 Q14=88 Q15=88



Photometric Parameters

Luminous Flux: 618.77 lm	Efficiency: 92.69 lm/W	Radiant Power: 2.206 W
Total mains efficacy: 85.83 lm/W	Energy Efficiency Class: F (EU 2019/2015)	

Electric Parameters

Voltage: 23.999V	Current: 0.2782A	Power: 6.68W
Power Factor: 1.0000	Frequency: 0.00Hz	

Test Infomation

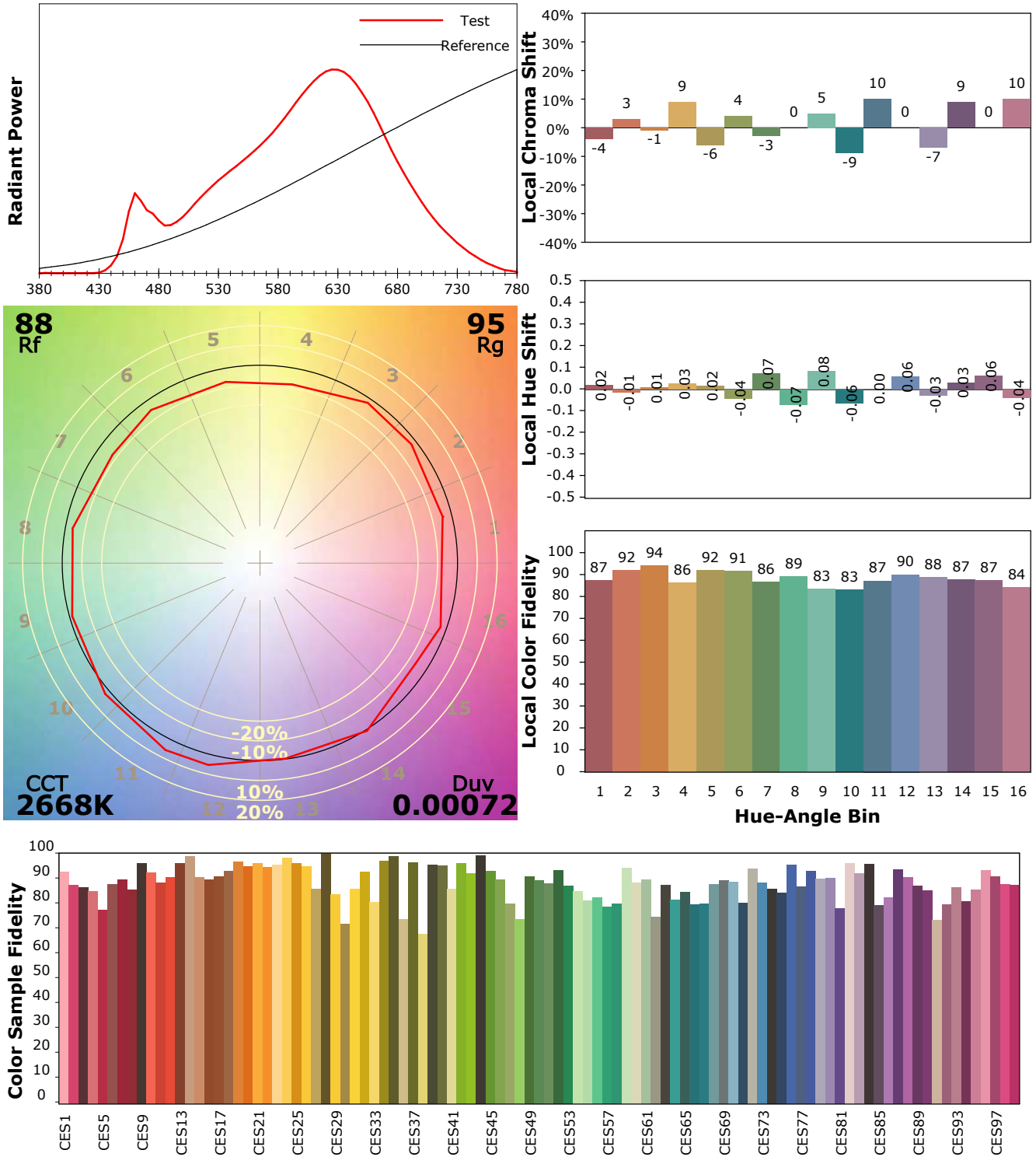
Scan Range: 380~800:1nm	Photometric Method: sphere-spectroradiometer
Stabilization Time: 0 Sec ALC.: 1.0000	Photometric Condition: Sphere diameter: 1.50m, 4PI
Max of Signal: 47446 (2467)	CCD Integration Time: 959.39 ms

IES TM-30-18 Color Rendition Report

Product Information

Product Category: LED STRIP
 Product Spec: ALYA 4
 Manufacturer: TECSOLELED S.L.

Product Type: LED STRIP
 Product Number: 125
 Buyer: TECSOLELED S.L.



Condition: Tx:22.9'C, Ti:22.3'C, R.H.:60%
 Test Lab: TECSOLELED S.L.
 Operator: JORDAN GIL DIAZ

Test Device: Inventfine CMS-2S (Plus)
 Test Time: 2021-10-20 16:00:17
 Inspector: